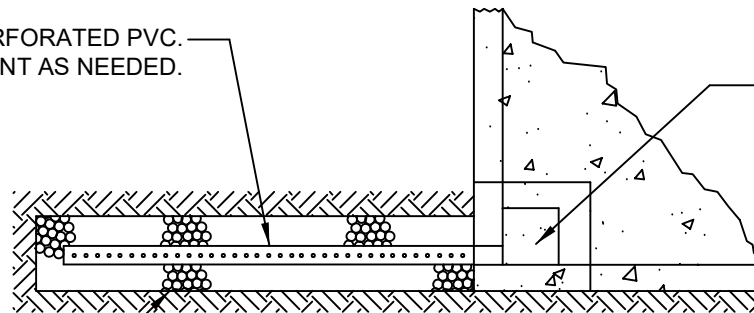


7' OF 4" PERFORATED PVC.  
ADJUST ALIGNMENT AS NEEDED.

12" X 12" X 6" DEEP  
DRAINAGE SUMP

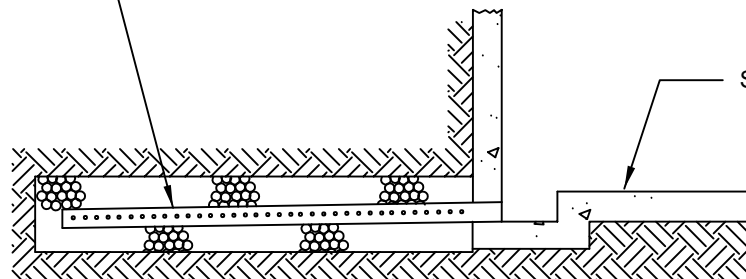


SEE UNDERDRAIN DETAIL FOR  
ROCK AND GEOTEXTILE  
FABRIC REQUIREMENTS

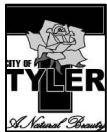
PLAN VIEW

4" PVC AT 1% SLOPE IN ACCORDANCE  
WITH CITY OF TYLER STANDARD  
SPECIFICATION FOR CONCRETE VAULTS

SLOPE TO DRAIN 1%



PROFILE VIEW



**CITY OF TYLER**  
STANDARD DETAIL

**CONCRETE VAULT**  
**FIELD LINE**

REVISION DATE:  
MAY 14, 2021