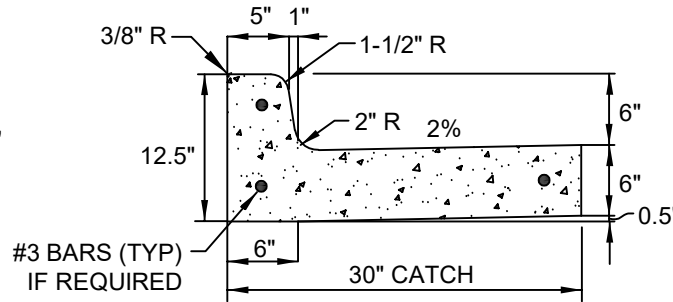
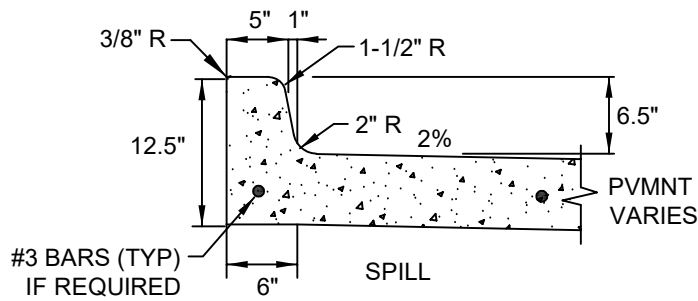


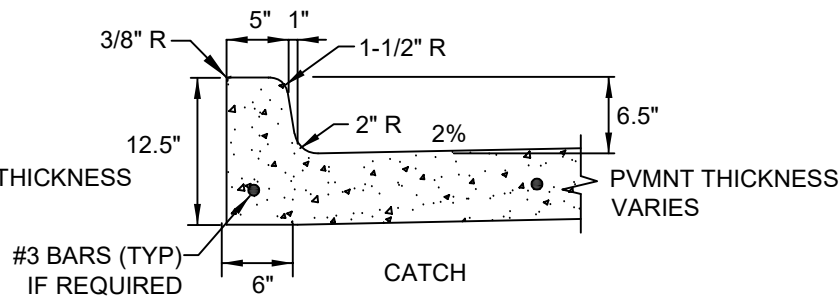
HMAC PAVEMENT



HMAC PAVEMENT



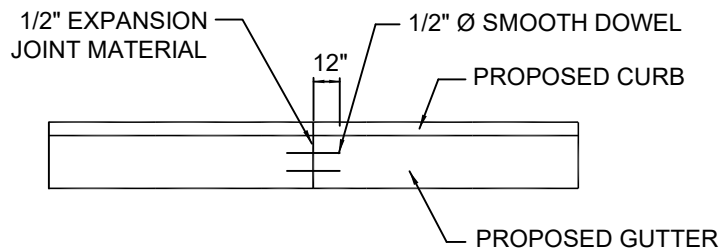
CONCRETE PAVEMENT



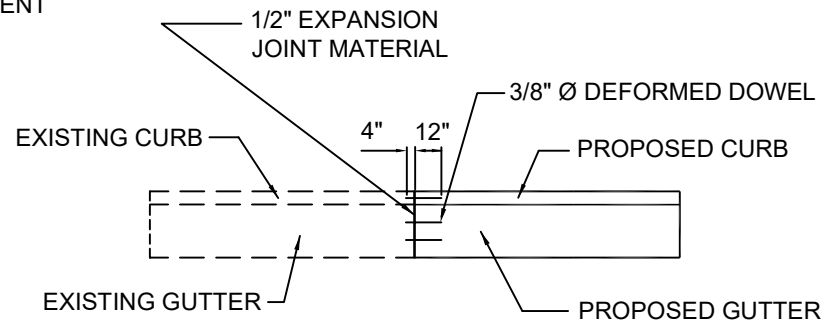
CONCRETE PAVEMENT

NOTES:

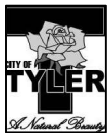
1. REINFORCEMENT IS NOT REQUIRED ON RESIDENTIAL COLLECTOR AND LOCAL STREETS.
2. SEE PAVING AND DRIVEWAY GENERAL NOTES FOR MORE INFORMATION.
3. INSERT #3 DOWEL (3/8" Ø DEFORMED BARS) TO A MINIMUM 4" DEPTH IN EXISTING CONCRETE CURB AND GUTTER.
4. EXPANSION JOINTS SHALL BE SEALED WITH APPROVED MATERIAL.



DOWEL DETAIL "A"
NEW CURB AND GUTTER
PLAN VIEW



DOWEL DETAIL "B"
EXTENSION OF EXISTING CURB AND GUTTER
PLAN VIEW



CITY OF TYLER
STANDARD DETAIL

CURB AND GUTTER

REVISION DATE:
MAY 14, 2021