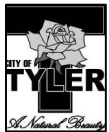
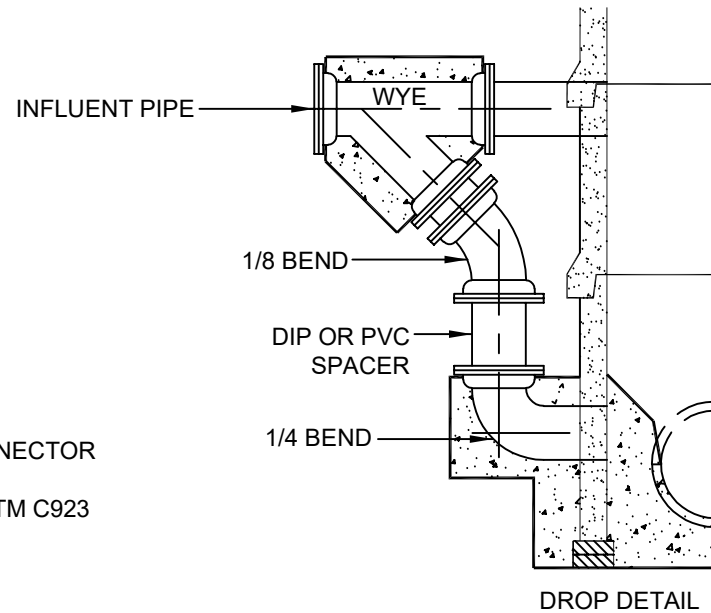
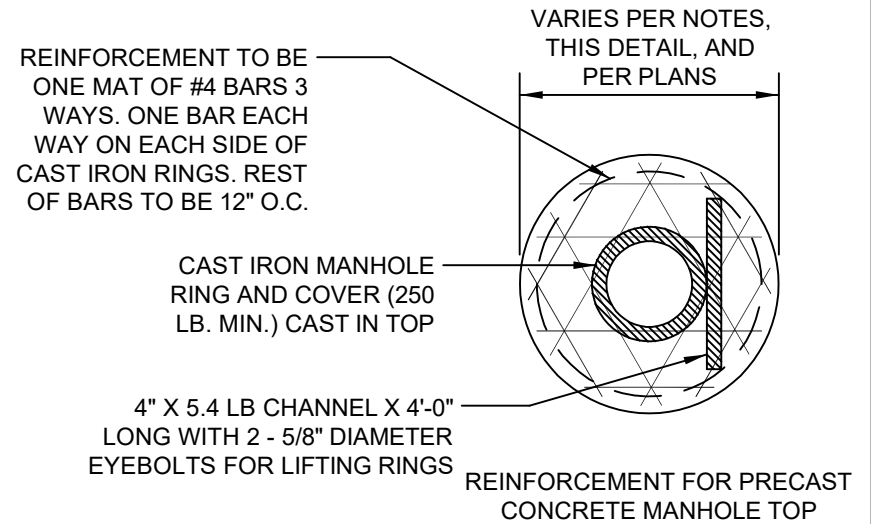
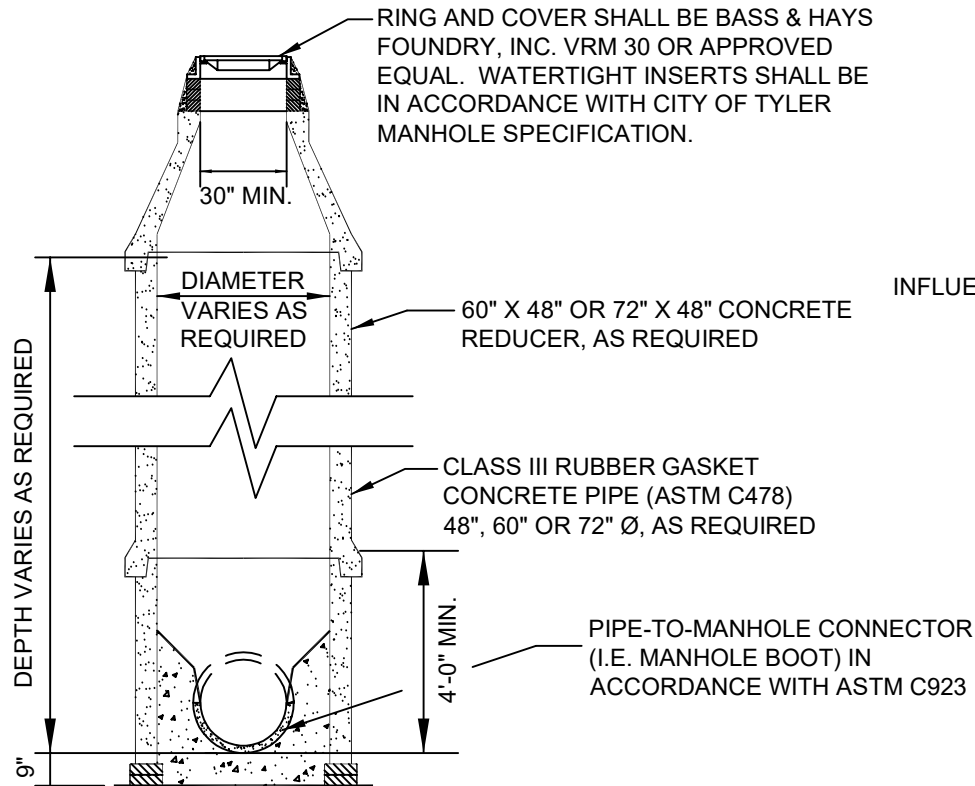


**NOTES:**

1. MANHOLE BOTTOMS TO BE 3,000 PSI CONCRETE (CLASS A). PRECAST BOTTOMS MAY BE USED IN LIEU OF CAST-IN-PLACE.
2. WITH APPROVAL OF ENGINEER, CONTRACTOR MAY USE FULL DIAMETER MANHOLE SECTIONS AND FLAT, REINFORCED TOPS (DETAILED RIGHT) IN LIEU OF STANDARD MANHOLES (DETAILED BELOW).
3. FOR PIPE UP TO 18", MIN INSIDE DIAMETER OF MANHOLE SHALL BE 4'-0".  
FOR PIPE UP TO 24" Ø, MIN INSIDE DIAMETER OF MANHOLE SHALL BE 5'-0".  
FOR PIPE GREATER THAN 24" Ø, MIN INSIDE DIAMETER SHALL BE 6'-0".



**CITY OF TYLER**  
STANDARD DETAIL

**SANITARY SEWER MANHOLE**

REVISION DATE:  
MAY 14, 2021